

TRAILSIDE APARTMENTS

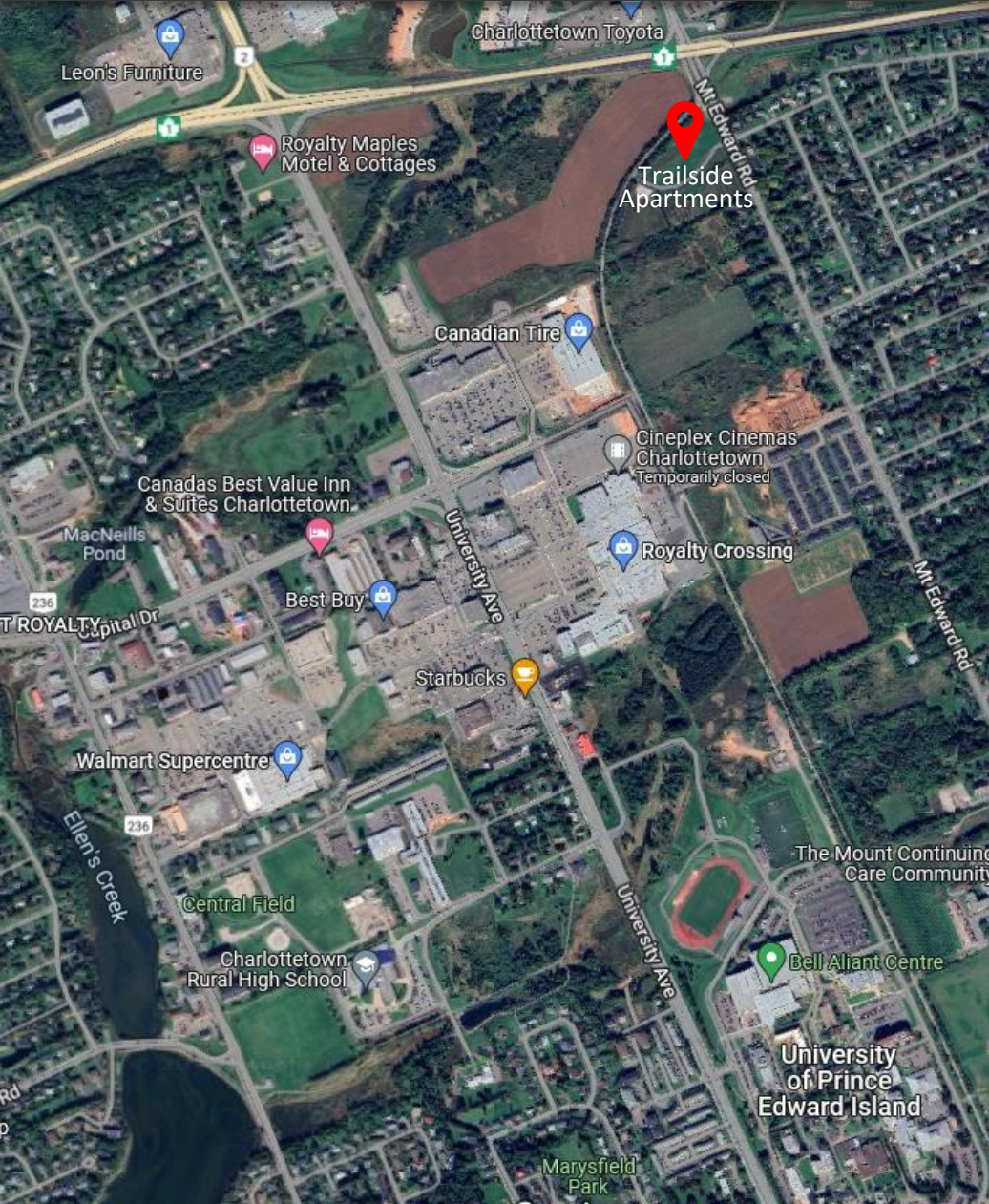
St. Martha's Court, Charlottetown, PE



*Drawings are subject to change without notice.
All dimensions are approximate and subject to
normal construction variances and tolerances.*

 **Dunne**
PROPERTIES

FEATURES



BUILDING FEATURES

- One- & Two-Bedroom Suites
- Balconies
- Air Conditioning
- Elevator
- Parking
- EV Charging Station
- Underground Storage
- Secure Building
- Common Room
- Concrete Poured Floors
& Extra Soundproofing

LOCATION FEATURES

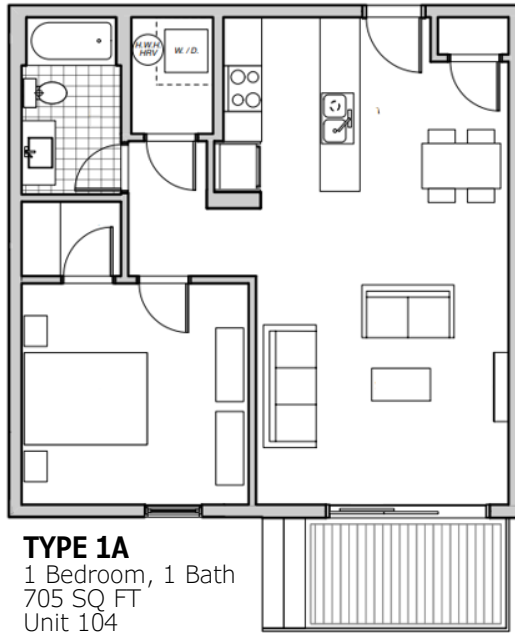
- Center of Charlottetown, provincial capital city
- Adjacent Confederation Trail (walking, biking)
- Covenants for building design, siding, trees & landscaping ensuring a high-end neighbourhood
- Walking distance to grocery, retail, cinema, shopping center, restaurants, fitness facility
- Short driving distance (10 minutes) to university, hospital, airport, downtown and other major restaurants & shops

UNIT FEATURES

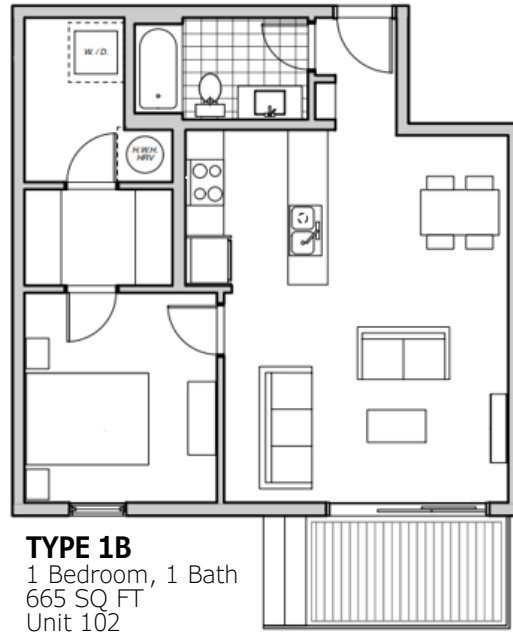
- In-Suite Laundry
- Modern Kitchens
- Large Windows
- Triple Glaze Windows in Bedrooms & Kitchen
- Modern Design
- Quality Stainless-Steel Appliances
- Quartz Countertops

TRAILSIDE APARTMENTS
St. Martha's Court, Charlottetown, PE

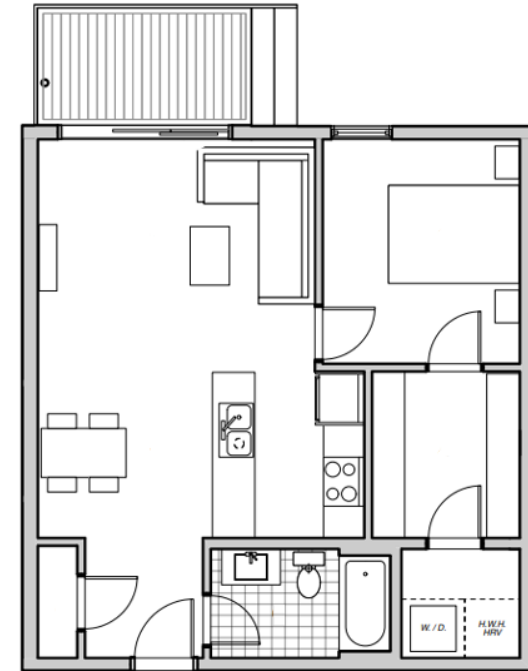
1 Bedroom | 1 Bath



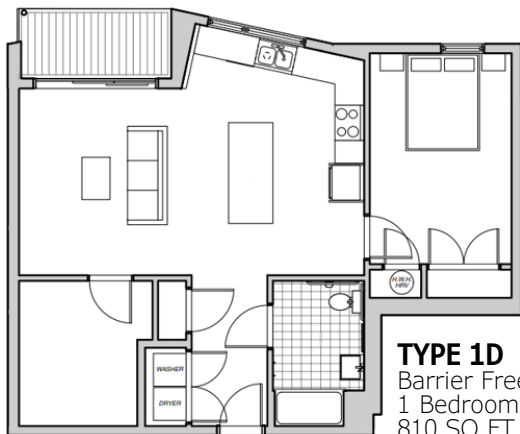
TYPE 1A
1 Bedroom, 1 Bath
705 SQ FT
Unit 104



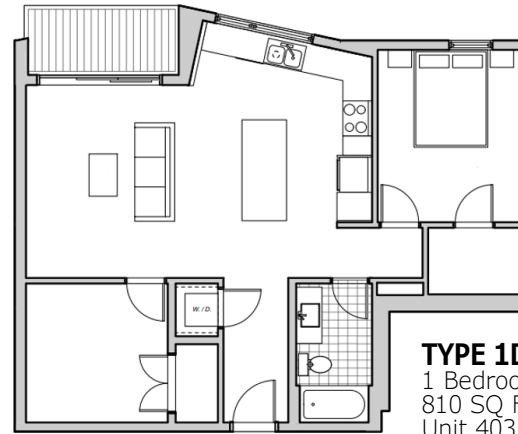
TYPE 1B
1 Bedroom, 1 Bath
665 SQ FT
Unit 102



TYPE 1C
1 Bedroom, 1 Bath
665 SQ FT
Unit 103



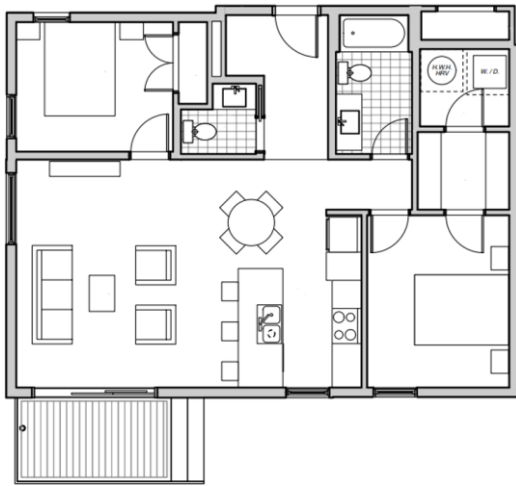
TYPE 1D
Barrier Free
1 Bedroom, 1 Bath + Den
810 SQ FT
Unit 203, 303



TYPE 1D
1 Bedroom, 1 Bath + Den
810 SQ FT
Unit 403

*Drawings are subject to change without notice.
All dimensions are approximate and subject to
normal construction variances and tolerances.*

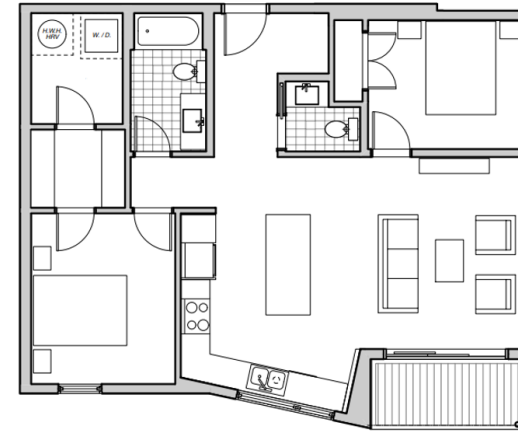
2 Bedroom | 1.5 Bath



TYPE 2A
2 Bedroom, 1.5 Bath
925 SQ FT
Unit 101, 105, 106



TYPE 2B
2 Bedroom, 1.5 Bath
915 SQ FT
Unit 201, 206, 301, 306, 401, 406



TYPE 2C
2 Bedroom, 1.5 Bath
915 SQ FT
Unit 202, 205, 302, 305, 402, 405



TYPE 2D
2 Bedroom, 1.5 Bath
915 SQ FT
Unit 204, 304, 404

*Drawings are subject to change without notice.
All dimensions are approximate and subject to
normal construction variances and tolerances.*